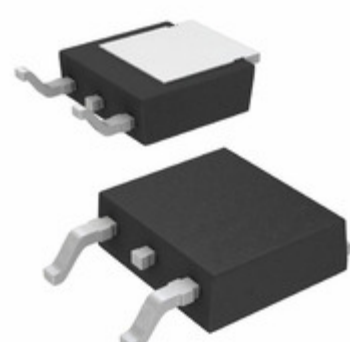


IRU1010-33CDTR



Images are for reference only.
See Product Specifications for product details.
Buy IRU1010-33CDTR with confidence from
Component-World.HK, 1 Year Warranty



Part Number: [IRU1010-33CDTR](#)
Manufacturer: [International Rectifier \(Infineon Technologies\)](#)
Description: IC REG LINEAR 3.3V 1A DPAK
Data sheet: [IRU1010-33\(PbF\)](#)

RoHS Status: Contains lead / RoHS non-compliant
Ship From: Hong Kong
Shipment Way: DHL/Fedex/TNT/UPS/EMS

[Request For Quotation](#)

PRODUCT PARAMETER

Part Number	IRU1010-33CDTR	Manufacturer	International Rectifier (Infineon Technologies)
Description	IC REG LINEAR 3.3V 1A DPAK	Lead Free Status / RoHS Status	Contains lead / RoHS non-compliant
Quantity Available	5788 pcs	Data sheet	IRU1010-33(PbF)
Category	Integrated Circuits (ICs)	Voltage Dropout (Max)	1.3V @ 1A
Voltage - Output (Min/Fixed)	3.3V	Voltage - Output (Max)	-
Voltage - Input (Max)	7V	Supplier Device Package	D-Pak
Series	-	Protection Features	Over Current, Over Temperature
Packaging	Tape & Reel (TR)	Package / Case	TO-252-3, DPak (2 Leads + Tab), SC-63
PSRR	70dB (120Hz)	Output Type	Fixed
Output Configuration	Positive	Other Names	IRU101033CD
Operating Temperature	0°C ~ 125°C	Number of Regulators	1
Mounting Type	Surface Mount	Moisture Sensitivity Level (MSL)	1 (Unlimited)
Lead Free Status / RoHS Status	Contains lead / RoHS non-compliant	Detailed Description	Linear Voltage Regulator IC Positive Fixed 1 Output 3.3V 1A D-Pak
Current - Output	1A	Control Features	-
Base Part Number	IRU1010-33CD		

Component-World.com is a Reliable Stocking Distributor of Electronic Components. We specialize in all International Rectifier (Infineon Technologies) series electronic components. We have 5788 pieces of International Rectifier (Infineon Technologies) IRU1010-33CDTR in stock available now. Request a quote from electronics components distributor at Component-World.com, our sales team will contact you within 24 hours.
RFQ Email: info@Components-World.com

RELATED PRODUCTS

	Part#: IRU1010-33CY Description: IC REG LINEAR 3.3V 1A SOT223	Manufacturers: International Rectifier (Infineon Technologies)	RFQ
	Part#: IRU1010-33CS Description: IC REG LINEAR 3.3V 1A 8SOIC	Manufacturers: International Rectifier (Infineon Technologies)	RFQ
	Part#: IRU1010-25CY Description: IC REG LINEAR 2.5V 1A SOT223	Manufacturers: International Rectifier (Infineon Technologies)	RFQ
	Part#: IRU1010-25CSTR Description: IC REG LINEAR 2.5V 1A 8SOIC	Manufacturers: International Rectifier (Infineon Technologies)	RFQ
	Part#: IRU1010-33CP Description: IC REG LIN 3.3V 1A 2-UTHINPAK	Manufacturers: International Rectifier (Infineon Technologies)	RFQ
	Part#: IRU1010CD Description: IC REG LINEAR POS ADJ 1A DPAK	Manufacturers: International Rectifier (Infineon Technologies)	RFQ
	Part#: IRU1010CP Description: IC REG LIN POS ADJ 1A 2-UTHINPAK	Manufacturers: International Rectifier (Infineon Technologies)	RFQ
	Part#: IRU1010-25CS Description: IC REG LINEAR 2.5V 1A 8SOIC	Manufacturers: International Rectifier (Infineon Technologies)	RFQ
	Part#: IRU1010-25CDTR Description: IC REG LINEAR 2.5V 1A DPAK	Manufacturers: International Rectifier (Infineon Technologies)	RFQ
	Part#: IRU1010CDTR Description: IC REG LINEAR POS ADJ 1A DPAK	Manufacturers: International Rectifier (Infineon Technologies)	RFQ
	Part#: IRU1010-33CSPBF Description: IC REG LINEAR 3.3V 1A 8SOIC	Manufacturers: International Rectifier (Infineon Technologies)	RFQ
	Part#: IRU1010-25CPTR Description: IC REG LIN 2.5V 1A 2-UTHINPAK	Manufacturers: International Rectifier (Infineon Technologies)	RFQ
	Part#: IRU1010-25CP Description: IC REG LIN 2.5V 1A 2-UTHINPAK	Manufacturers: International Rectifier (Infineon Technologies)	RFQ
	Part#: IRU1010-18CYTR Description: IC REG LINEAR 1.8V 1A SOT223	Manufacturers: International Rectifier (Infineon Technologies)	RFQ
	Part#: IRU1010-33CYTR Description: IC REG LINEAR 3.3V 1A SOT223	Manufacturers: International Rectifier (Infineon Technologies)	RFQ
	Part#: IRU1010-33CD Description: IC REG LINEAR 3.3V 1A DPAK	Manufacturers: International Rectifier (Infineon Technologies)	RFQ
	Part#: IRU1010-33CPTR Description: IC REG LIN 3.3V 1A 2-UTHINPAK	Manufacturers: International Rectifier (Infineon Technologies)	RFQ
	Part#: IRU1010-25CYTR Description: IC REG LINEAR 2.5V 1A SOT223	Manufacturers: International Rectifier (Infineon Technologies)	RFQ
	Part#: IRU1010-33CSTR Description: IC REG LINEAR 3.3V 1A 8SOIC	Manufacturers: International Rectifier (Infineon Technologies)	RFQ
	Part#: IRU1010-25CD Description: IC REG LINEAR 2.5V 1A DPAK	Manufacturers: International Rectifier (Infineon Technologies)	RFQ

Related keywords for IRU1010-33CDTR

International Rectifier (Infineon Technologies)	IRU1010-33CDTR distributor	IRU1010-33CDTR supplier	IRU1010-33CDTR price
IRU1010-33CDTR	IRU1010-33CDTR download datasheet	IRU1010-33CDTR datasheet	IRU1010-33CDTR stock
buy IRU1010-33CDTR	International Rectifier (Infineon Technologies)	International Rectifier IRU1010-33CDTR	Infineon Technologies IRU1010-33CDTR
	IRU1010-33CDTR	International Rectifier (Infineon Technologies)	IR (Infineon Technologies) IRU1010-33CDTR
		IRU1010-33CDTR	